

**The most advanced device  
for cloning and programming  
transponders**



**AdvancedCode**  
— EVO-PLUS —



**ADE Group**

# Advanced Code Evo Plus

Advanced Code EVO Plus is the most technologically device for working with transponders in all vehicles equipped with immobilizer system.

One of the many advantages function what device included is identification and cloning most transponders on the market present in cars, trucks, motorcycles and water vehicles.

Professional EEPROM function allows for programming key even if there is no key - "All Keys Lost" situations.

Special functions connected with a PC software create the most universal platform for locksmith and electronic garages.

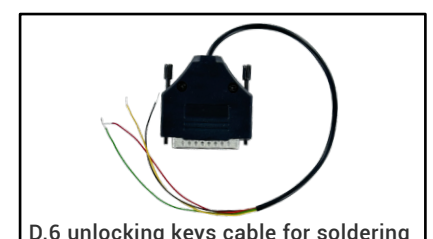
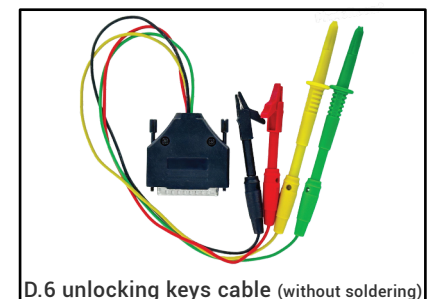
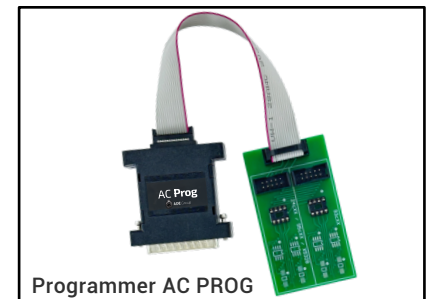
Our idea is to develop device together with all users. This made it more professional and easier to use for beginner and advanced customers.

Using the latest software solutions, it is the fastest growing platform for working with vehicles keys.

## Main functions

- Identification transponders / Cloning transponders
- Identification of transponders configuration lock/unlock
- Key Explorer - reading parameters such as: vin, mileage, key number, status, frequency, first registration, last update.
- Cloning 125 MHz access cards and fobs
- Cloning access cards and fobs Mifare 13,56 MHz
- Generation OEM transponders
- Generation transponders with remote functions (Philips Crypto ID:46)
- Generation „dealer key" based on CS or binary data
- Generation transponders from EEprom file based on data binary (more than 1860 models)
- Reading data from binary files (keys, PIN, VIN and others)
- Memory programmer (SOP8, SSOP8, TSOP8)
- Functions for reading and calculation PIN code
- Unlocking keys through built-in antenna
- Unlocking keys by connecting to the chip PCF7941, 7945, 7952, 7953, 7961
- Advanced catalogs, procedures and synchronizations
- ECU and BCM2 editors
- Generation transponders from the Super VAG file
- OBD functions for all key lost Toyota „G" and Toyota „H"
- Reading immo modules using special cables (without soldering)
- Advanced transponders editors
- and many others.

### The basic set:



# Basic Version

- Transponders identification
- Cloning fixed code transponders (11, 12, 13, 14, 33, 73, 4C)
- Cloning Philips Crypto ID.40 unlocked mode (Opel)
- Cloning Philips Crypto ID.42 (VAG, Ford)
- Cloning Texas 4C
- Cloning Texas Crypto 4D (60, 61, 62, 63, 64, 65, 66, 67, 68, 69, 70, 71, 72) online
- Cloning Texas Crypto 4D (65, 66, 67, 68, 69, 70, 71, 72) offline
- Cloning Texas Crypto II 6F
- Cloning 125 MHz access cards and fobs (intercoms, access control)
- Cloning access cards and fobs Mifare 13,56 MHz (intercoms, access control)
- Cloning and generation ATRA keys
- Unlock and reset Megamos ID.48 CR2
- Unlock ID.46 Chrysler, Dodge, Honda, Hyundai, Jeep, Kia, Suzuki
- Unlock China BMW remote keys
- Generation fixed code transponders
- Generation transponders for Mercedes C, E, G 1996-2002 (ready for use)
- Transponders test PCF7930/31, PCF7935, 46w/46w2, 48w/48w2
- PIN code calculation from transponder ID.33 (Renault)
- PIN code calculation from transponder ID.46 (Kia/Hyundai)
- PIN code calculation for chassis numbers cars (Kia/Hyundai)
- PIN code calculation from the ICU label (Nissan/ Infiniti)
- EML Keys battery charge (indecomposable BMW, ford etc.)
- Transponder archive (fixed code and crypto)
- Transponder keys catalogue
- Transponder keys catalogue for manual programming procedures (cars and motorcycles)
- Key Explorer - reading parameters such as: vin, mileage, key number, status, frequency, first registration, last update.
- Hardware and software online update
- Transponders counter using protected password
- Timetable
- Polish, English, Czech, Russian, Spanish, Portugal, Slovak, French languages
- Possibility to connect TPX Cloner and TPH Cloner

**Attention! The base version includes the following packages:**

**Package 1, Package 3, Package 8, Package 11, Package 2-0, Package D.5,  
Programator AC Prog.**

**Description of the packages you can find in the next pages.**

## Package 1 / basic version

- Cloning Texas Crypto 4D (60, 61, 62, 63, 64, 65, 66, 67, 68, 69, 70, 71, 72) on TPX2
- Cloning Texas Crypto II 6F on TPX2
- In the basic version possible to write on transponders ADX, LKP02, CN2, CN5, XT27A

## Package 3 / basic version

- Cloning transponders Philips Crypto ID.41 Nissan
- Cloning transponders ID.42 VAG and Ford
- Cloning transponders ID.44 VAG and Ford
- Cloning transponders ID.44 Mitsubishi
- Cloning transponders ID.45 Peugeot
- Write on special transponder 44AD3
- PIN code calculation from transponder ID.45 Peugeot
- PIN code calculation from transponder ID.60/64 Renault Megane

## Package 6 / additional activation

- Cloning transponder Philips Crypto II ID.46 (1998-2016+) on transponders TPX3, TPX4, TK60, 46w2, CN3, LKP03, KD46, XT27A
- PIN code calculation from transponder ID.46 - KIA /Hyundai using TK60
- PIN code calculation from transponder ID.46 for all Peugeot/Citroen models using TK60
- PIN code calculation ID.46 from the original key for all Peugeot/Citroen

Supported models (cloning):

Abarth, Acura, Alfa Romeo, Audi, BMW, Buick, Cadillac, Chevrolet, Chrysler, Citroen, Dacia, Dodge, DR Motors, Fiat, GMC, Holden, Honda, Hummer, Hyundai, Infiniti, Isuzu, Iveco, Jeep, Kia, Lancia, Land Rover, Mitsubishi, Nissan, Opel, Peugeot, Pontiac, Porsche, Renault, Saturn, Smart, Sterling, Suzuki, Volkswagen

## Package 8 / basic version

- Cloning transponders Temic Crypto 8C (Mazda, Ford, Proton) on transponders 8C ADE, TK5561, XT27A
- Transponders generation Temic Crypto 8C for Mazda, Ford i Proton
- Cloning transponders ID:48 Daewoo-Chevrolet, KIA

## Package 11 / basic version

- Cloning transponders ID:6E DST80 Toyota G (Pg1:19,36,56,96,37,57,97)
- **Transponder generation ID:6E DST80 Toyota G (Pg1:19,36,56,96,37,57,97)**
- Write on transponders: LKP02, CN5, XT27A

Supported models: Camry, Corolla, RAV4, Yaris, Venza, Auris, Avensis, 4 -Runner, FJ Cruiser, Hiace, Highlander, Mark-X, Prius-C, Sequoia, Sienna, Tacoma, Toyota GT86, Tundra

## Package 12 / additional activation

- Cloning transponders ID:6E KIA/Hyundai
- **Reading PIN code from working key ID:6E KIA/Hyundai**
- Cloning transponders ID:6E-63 Ford offline/online
- **Cloning transponders ID:6E Ssang Young (some models)**
- Write on transponders: LKP02, CN5, XT27A

Supported models:

Ford Australia, Ford Europa, Ford Ameryka Południowa, Ford USA, Hyundai, Kia, Lincoln, Mazda, VPG i SsangYoung.

## Package 13 / additional activation

- Cloning transponders ID:75 Toyota H (Pg1:39,59,99,3A,5A,7A)
- **Transponders generation ID:75 Toyota H (Pg1:39,59,99,3A,5A,7A)**
- Write on transponders: LKP04, KD-8A

Supported models:

**Toyota:** Aurion, Auris (EU), Auris (USA), Aygo, Camry, Corolla, Hiace, Hilux, Kluger, Land Rover 200, RAV4, Yaris, Camry, C-HR, Corolla, Corolla iM, Highlander, Prius C, RAV 4 (USA), Sequoia, Sienna, Tundra, Yaris (USA) **Citroen:** C1, **Peugeot:** 208, **Scion:** iM

## Package 48 / additional activation

- Full cloning of the transponders Megamos Crypto ID:48
- **Precise reading data from the car using Snoop**
- Write on the glass transponder Silca T48
- **Supported more than 200 cars models from over 30 different brands (the list of supported models can be found on our website)**



## Package 4 / additional activation

- Generation transponders Philips Crypto 40 GM, 41 Nissan, 42, Ford, 42 Vag, 44 Ford, 44 Vag, 45 Peugeot
- **Generation transponders Philips Crypto II ID:46 - more than 200 types**
- Generation transponders Philips Crypto II ID:46 on board (PCF7946, PCF7947)
- **Generation transponders Texas Crypto 4D (61, 62, 63, 64, 65, 66, 67, 68, 69, 70, 6A)**
- Remote programming procedures - Europe (more than 700 pcs)
- **Remote programming procedures - USA (more than 400 pcs)**
- Remote synchronization procedures Europe / USA
- **Locations of diagnostic sockets**
- VAG engine list
- **VAG dashboard pin positioning (Micronas and NEC)**
- VAG vin precoding - writing component security to VAG CAN ID:48 with searching missing byte from the working key
- **Generation transponders from SuperVAG file**
- Ford-Mazda incode/outcode calculation (valid till 05-2010)
- **Silca and Keyline catalogues**

## Package 4-1 / available in the package 4

- Generation transponders ID:49 AES MQB from SuperVAG file
- **Supported VDO i Johnson Controls dashboards**

## Package 9 / additional activation

- Function for reset smart keys Toyota, Lexus, Subaru
- **Identify used/not used**
- Read key ID, read smart ID, read key number
- **Reset ID:6A (DST 40) - Pg1:94,9F,D4**
- **Reset ID:6B (DST 80) - Pg1:78,98,F1**
- **Reset ID:74 (DST 128) - Pg1:88,A8,A9**
- **Reset ID:75 (AES) - Pg1:39**

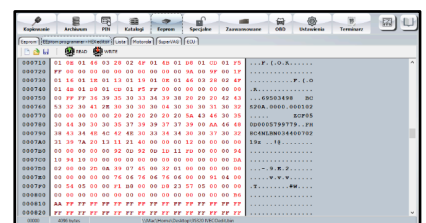
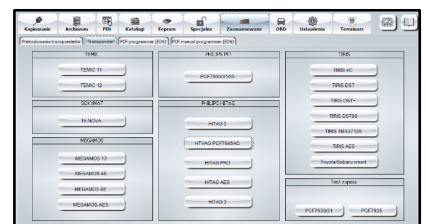
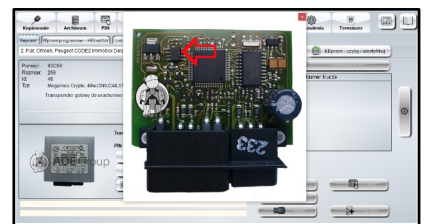
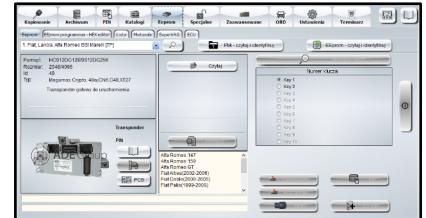
## Package 2-0 / basic version

The package included in the basic version software allows you to program the transponder, precode or calculate pin codes directly from the immobilizer box, dashboards, ECU's and other modules which gives an additional option to make a key when the customers does't has any keys or cannot be programming via OBD.

Package 2-0 contains over 200 eeprom modules and supports more than 1100 car models.

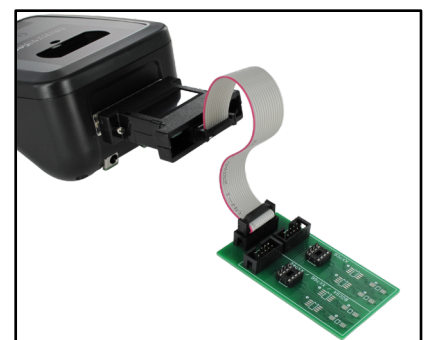
### Main Features:

- Transponders generation from bin file
- **Generation remote key from bin file**
- Add transponders to immo
- **Add OEM keys to immo**
- Add keys without change the eeprom
- **Add cards to immo (Renault)**
- Precoding transponders from eeprom memory to chassis number
- **Generation PIN code from immo dump**
- PCB's photos
- **Immo modules photos**
- Localization of immo modules
- **Motorola mask catalog**
- Editors: EDC17 VAG, MED17 VAG, EDC17 VAG IMMO6, BCM2
- **Generation transponders with use of immo bytes (3,4 or 5 bytes)**
- Advanced transponder editors: Temic, Sokymat, Megamos, Philips Pit, Philips Hitag, Tiris
- **HexEditor (Bin file editor)**
- Automatic file recognition
- **Binary archive**
- **ONLINE instruction**



## AC Prog / basic version

- Memory programmer SOP8, SSOP8, TSOP8
- **Automatic file recognition**
- Option for manual read/write
- **Support more than 325 modules available in Advanced Code EVO Plus software**



## D.1 EWS Reader / additional activation

- Read dump from EWS-3 module (BMW, Rover) via special cable
- Possibility program standard transponder and original (EML)

## D.2 AC Reader / additional activation

- Eeprom reading from NATS-5 immo module via special cable
- Eeprom reading from UCH (Renault) immo module via special cable
- Eeprom reading from motorcycles and scooters immo module via special cable (Piaggio, Peugeot, Gilera)

## D.3 Moric Prog / additional activation

- Reading Yamaha Moric MCU module via special cable
- Programming the key ready to start the motorcycle

## D.4 Immo1 Reader / additional activation

- Eeprom reading from ImmoBox Siemens (-1999 Opel) via special cable
- Eeprom reading from ImmoBox Siemens (-1998 Grupa VAG) via special cable
- Programming the key ready to start the car

## D.5 Mifare / basic version

- Cloning access cards and fobs Mifare 13,56 MHz
- Built-in antenna (without additional box)

## D.6 PCF Programmer / basic version

- Unlocking keys by connecting to the chip PCF7941, 7945, 7952, 7953, 7961
- Integrated with Advanced Code EVO PC Software
- Two types of cables (for soldering and no soldering)
- 94 basic files for unlocking keys
- Visit our website to check supported list

## D.6-2 PCF Programmer / additional activation

- 124 additional extension files for unlocking keys
- Visit our website to check supported list